



DSD4000 ACCESSORIES



JDL-OV-WAND-BLU

Complete Blue Wand Assembly

The Blue Wand replaces the Green and Purple Mercedes Wands that have been discontinued.



JDL-OV-WAND-GLD

Complete Gold Wand Assembly

The Gold Wand replaces the Yellow Wand which has been discontinued.



JDL-OV-WAND-RED

Complete Red Wand Assembly



JDL-OV-WAND-SIL

Complete Silver Wand Assembly



JDL-OV-CUP-BLU

Replacement Blue Vacuum Cup for Blue Suction



JDL-OV-CUP-GLD

Replacement Gold Vacuum Cup for Gold Suction Wand



JDL-OV-CUP-RED

Replacement Red Vacuum Cup for Red Suction Wand



JDL-OV-CUP-SIL

Replacement Silver Vacuum Cup for Silver Suction Wand



JDL-OV-TUBE-BLU

48" Replacement PFA Tube for Blue Wands—1/4" OD



JDL-OV-TUBE-GLD

48" Replacement PFA Tube for Gold Wands—5/16" OD



JDL-OV-TUBE-RED

48" Replacement PFA Tube for Red Wands—3/16" OD



JDL-OV-TUBE-SIL

48" Replacement Tube for Silver Wands—1/4" ID



JDL-OV-TUBE-GRN
Green 1/4" Differential Tube



JDL-OV-SWHSASY

Complete Swivel Hose Assembly

Includes hose, grip, and nozzle.



JDL-OV-SH10

10' Suction Hose



JDL-OV-NOZZLE

Nozzle assembly

Replaces older "black" nozzle



JDL-OV-GRP-BLK-VAC

Hose Grip Assembly: Includes handle, screws, and insert (assembled)



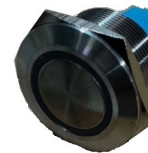
JDL-OV-LT

Front Oil Tank: Includes tank, lid, ports, and screen printed volume guide



JDL-OV-LED

Front Oil Tank LED Lighting Strip



JDL-OV-25MM-MPB

25MM Push Button and Wiring Adapter



JDL-V75-M3X10B

Nozzle O-Rings (set of 2)



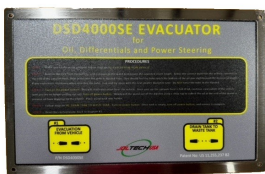
JDL-O9

Stainless Steel Hose Hook



JDL-OV-WR

47" Wire for Wands



CCP-O

Console Control Panel Overlay

**DRAWINGS AND PARTS BREAKDOWN
AVAILABLE AT WWW.DEVONLUBE.COM**

(888) 500-0353

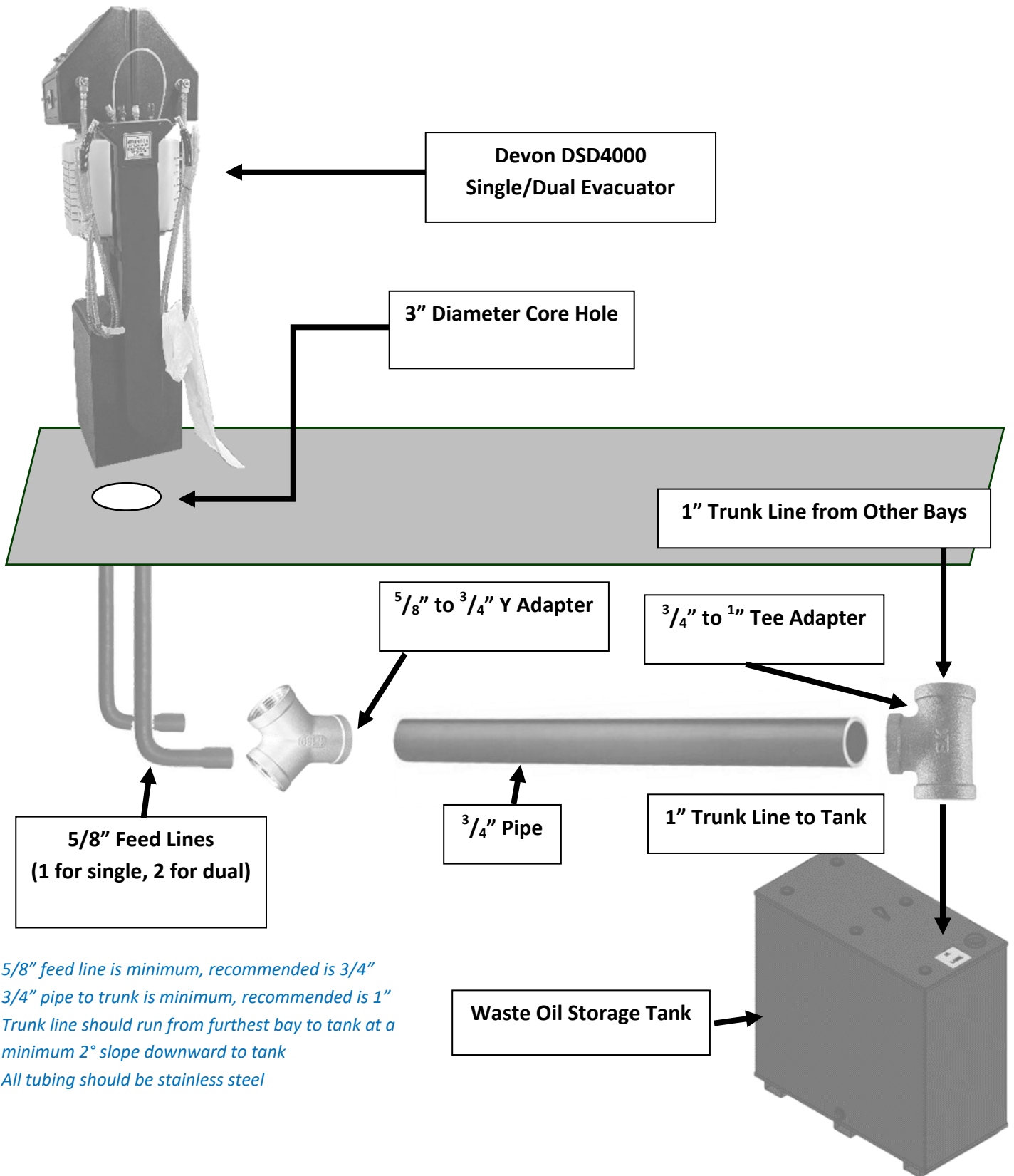
CONTACT US

sales@devonlube.com

7510 Melrose Lane, Oklahoma City, OK 73127



DSD4000 INSTALLATION



*5/8" feed line is minimum, recommended is 3/4"
3/4" pipe to trunk is minimum, recommended is 1"
Trunk line should run from furthest bay to tank at a minimum 2° slope downward to tank
All tubing should be stainless steel*

(888) 500-0353

CONTACT US

sales@devonlube.com

7510 Melrose Lane, Oklahoma City, OK 73127

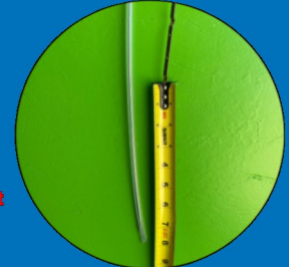
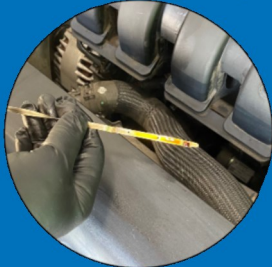
STEP 1:

Remove the dipstick from the vehicle. (Check if the vehicle's oil level measures as full or low. This will determine how much oil you can expect to evacuate.)



Select the preferred vacuum wand from the tool holder.

Make sure the wand is 4-6" longer than the vehicle's dipstick.



***Do not attempt to use a wand that doesn't easily slide into the dipstick.**

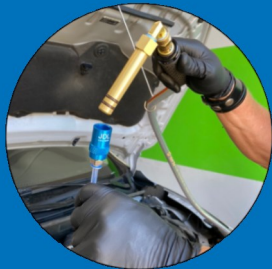
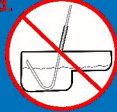
STEP 2:

Gently push the wand down through the dipstick until you feel it touch the bottom of the oil pan.

***Do not push too hard. This could cause the tube to hit the oil pan and bend upward and/or get tangled in the oil screen. This will damage the wand.**

Now that you have the wand in place, attach the vacuum hose from the static system to the vacuum wand cup.

***Use the vacuum hose hook by attaching it to the underside of the car's hood to prevent the hose from bending and to avoid laying it on the hot manifold.**

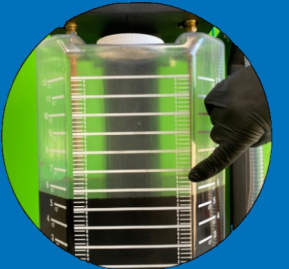
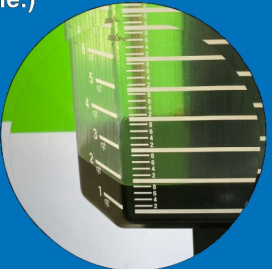


STEP 3:

Move the two directional valves on the face panel to position as shown in Diagram #1. Switch the power ON to start evacuation from the vehicle.

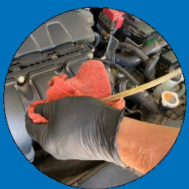
Once you see the vacuum hose is full of oil, continue evacuation of the vehicle until you are no longer pulling out oil. You will see the system's tank filling with oil. (Before removing, gently push the wand down further into the oil pan to pick up any residual oil if possible.)

The rest of the oil will be in the hoses and filter. Slowly pull the wand out of the dipstick. (You may notice the wand pulling more oil as you slowly remove it.)



Use a shop rag at the end of the wand to prevent oil from dripping on the engine. Detach the hook from the hood, place the wand back into the tool holder, and disconnect the vacuum hose. Turn the power switch OFF. Place the dipstick back into the vehicle.

***Look to see the amount of oil collected in the system's tank to determine if the evacuation amount is correct for the vehicle. (For 5qts, the tank should show a minimum of 4.2qts collected.)**



STEP 4: Follow Diagram #2, then turn the power switch ON to drain the tank to the waste. Once you see that the tank is empty, turn the power switch OFF. Service is complete.

STEP 5: Reset the directional valves back to Diagram #1.





DSD4000

The DEVON DSD4000 oil evacuation machine comes in 3 options

Single Static

Dual Static

Mobile



For over 30 years, DEVON has been the trusted source for quality equipment and installation. Visit our website for our full linecard, or scan here to learn more now!



www.devonlube.com